



# WASHING MACHINE ANALOGY

# WASHING MACHINE ANALOGY

## WHAT IF WE IMAGINE INTESTINE AS A WASHING MACHINE?





# ANALOGY

## WASHER HOOK-UP



**ARTERY**

**VEIN**

**DRAINING PIPE = LYMPHATICS**

Artery and vein supply  
fluids for secretion

## DRUM



**THE INTESTINE**



# ANALOGY CONTINUED

## LAUNDRY, WATER AND DETERGENTS



### INCOMING FLUIDS:

What we eat and what is further supplemented by the digestive tract, I.E water, or food and secretions from various glands

## SPUN LAUNDRY



### SOLID WASTE

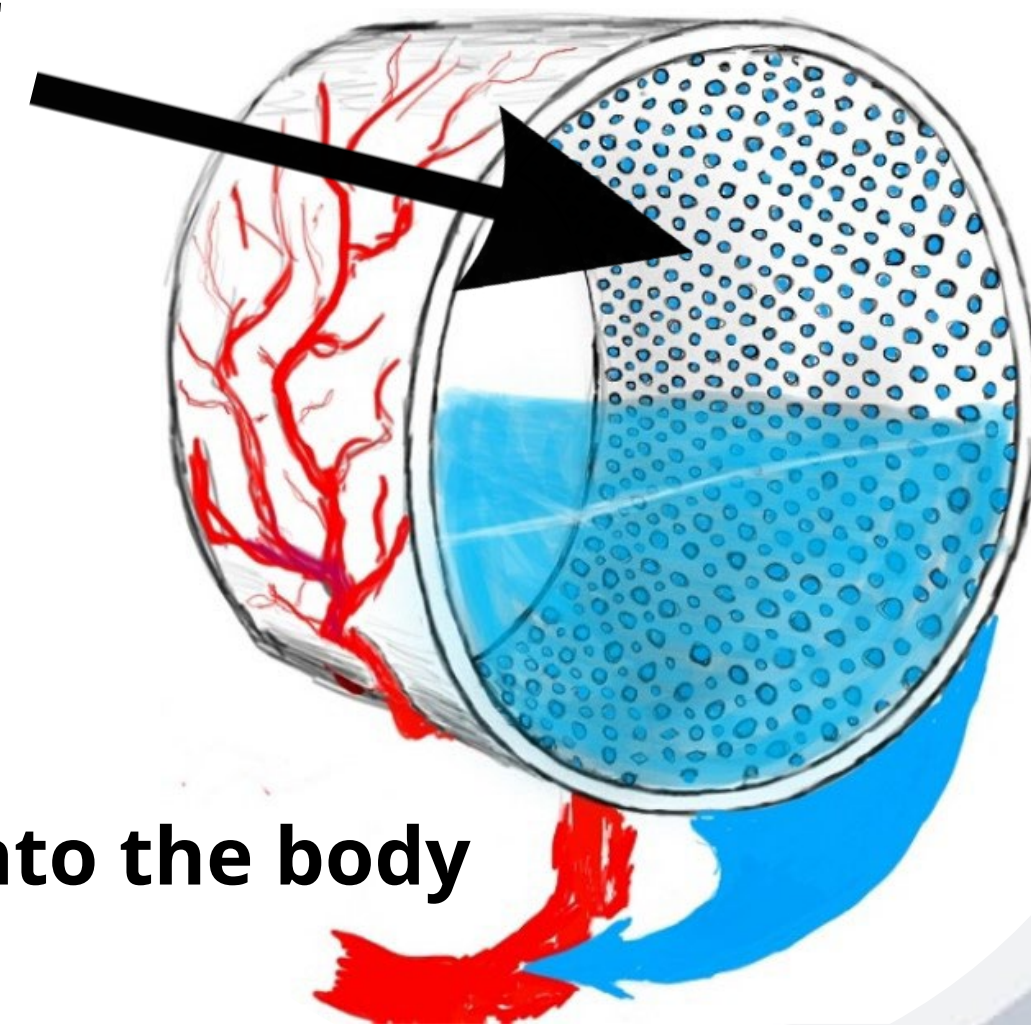


# WHAT IS MOST IMPORTANT TO CONTROL THE FLOW?



**HOLES = Channels for water absorption**

**INTESTINE**



**Absorbs fluids into the body**

1. Lets the water through
2. Controls the flow from washer in to drainage
3. Critical element for proper fluid management

# WHAT IF THERE WERE NO CHANNELS

**DRUM, WITH CHANNELS**



**POT, NO CHANNELS**





# OVERFLOW

**FLUIDS ARE NOT  
"ABSORBED"**



**MASSIVE OVERFLOW  
AND FLOODING**



**DIARRHEA**

**MACHINE FILLS IN  
QUICKLY**



[mvid.vanessaresearch.com](https://mvid.vanessaresearch.com)  
[shylicine.com](https://shylicine.com)